



jordan fishwick

Summerfield Village Court Ringstead Drive,
Guide Price £184,950

Ringstead Drive Wilmslow SK9 2TG

Guide Price £184,950




A beautiful outlook and an excellent location combine to make this well-presented second-floor apartment an ideal choice for first-time buyers, investors, or those looking to downsize. Situated within a popular development, the property enjoys convenient access to local shops, the A34 bypass, Handforth Dean Shopping Centre, and Manchester Airport. The accommodation briefly comprises a communal entrance hall with stairs to the second floor, a private entrance porch, a spacious lounge, and a fitted kitchen with integrated appliances. There is a well-proportioned double bedroom, a single bedroom, and a modern bathroom fitted with a shower over the bath. The property also benefits from its own allocated parking space. Wilmslow town centre offers an excellent range of amenities, including a variety of shops, bars, and restaurants. Wilmslow train station provides direct services to London Euston and Manchester city centre, making the location ideal for commuters. The property also offers easy access to the M56 and A34, connecting to Manchester, the North West's commercial centres, and Manchester Airport, which is less than 20 minutes away.



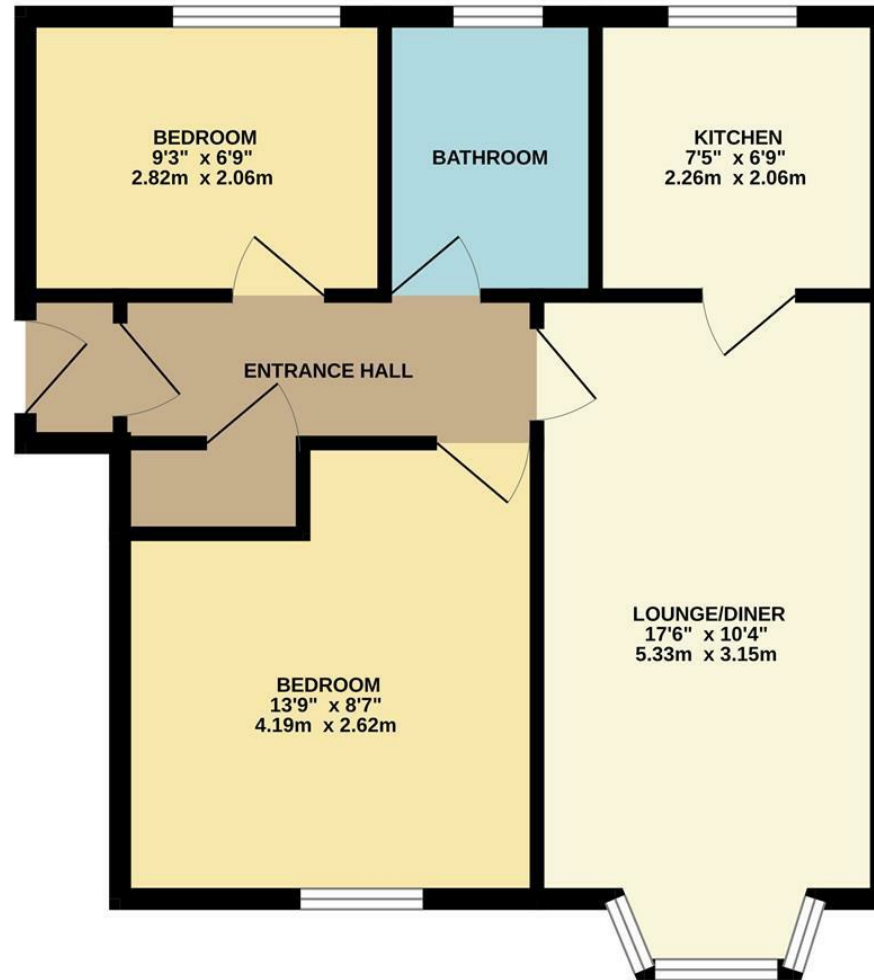


- Two Bedrooms
- Parking
- Popular Development
- Close To Amenities
- Pleasant Outlook
- Must View!



Energy Efficiency Rating		
	Current	Potential
Very energy efficient - lower running costs		
(92 plus) A		
(81-91) B		
(69-80) C		75
(55-68) D	67	
(39-54) E		
(21-38) F		
(1-20) G		
Not energy efficient - higher running costs		
England & Wales	EU Directive 2002/91/EC 	





These particulars are believed to be accurate but they are not guaranteed and do not form a contract. Neither Jordan Fishwick nor the vendor or lessor accept any responsibility in respect of these particulars, which are not intended to be statements or representations of fact and any intending purchaser or lessee must satisfy himself by inspection or otherwise as to the correctness of each of the statements contained in these particulars. Any floorplans on this brochure are for illustrative purposes only and are not necessarily to scale.

Offices at: Chorlton, Didsbury, Disley, Hale, Glossop, Macclesfield, Manchester Deansgate, Manchester Whitworth Street, New Mills, Sale, Wilmslow and Withington

36-38 Alderley Road, Wilmslow SK91JX
01625 532000

wilmslow@jordanfishwick.co.uk
www.jordanfishwick.co.uk